

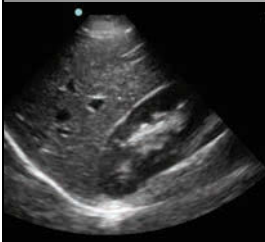
## Point of Care Ultrasound Required Images

### General Guidelines:

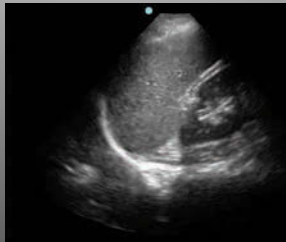
- Short and Long axes of area of interest
- Images of normal adjacent area or contralateral side for comparison
- Include images with abnormal findings
- Label (Annotations) all images

# FAST

### Morison's

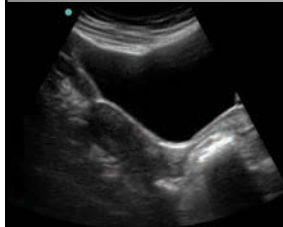


### Spleno-Renal



### Pelvic

#### Long Axis



#### Short Axis

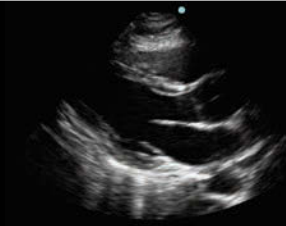


### Pericardial

#### Subxiphoid

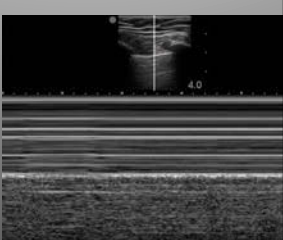


#### Parasternal Long Axis

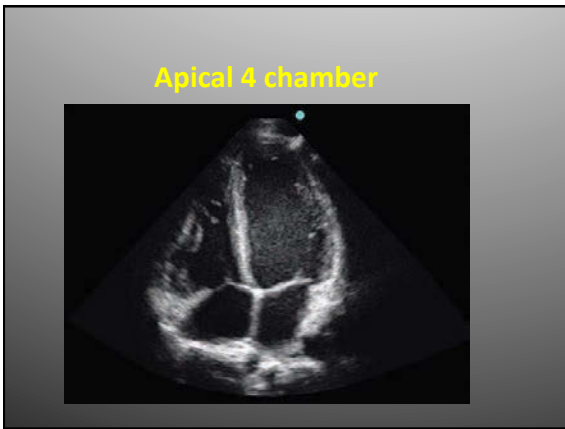
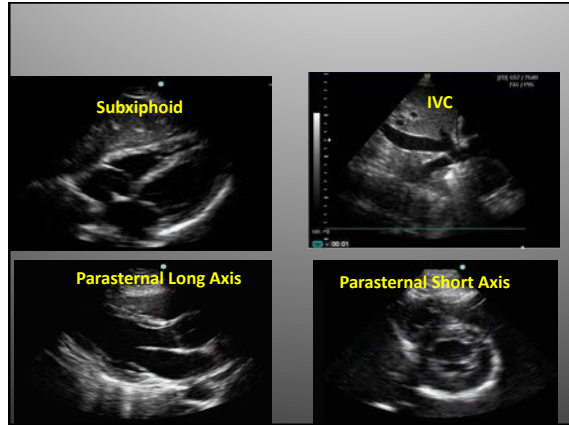


### Pleural

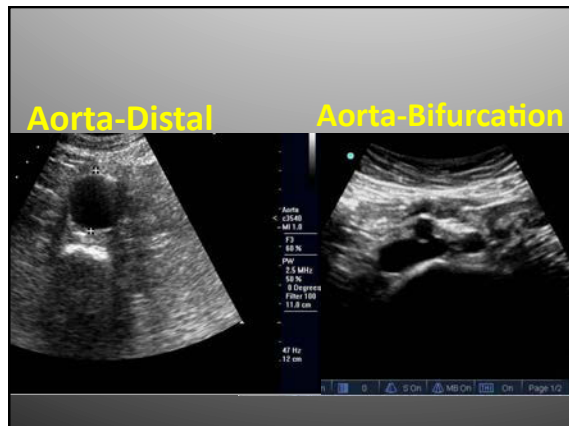
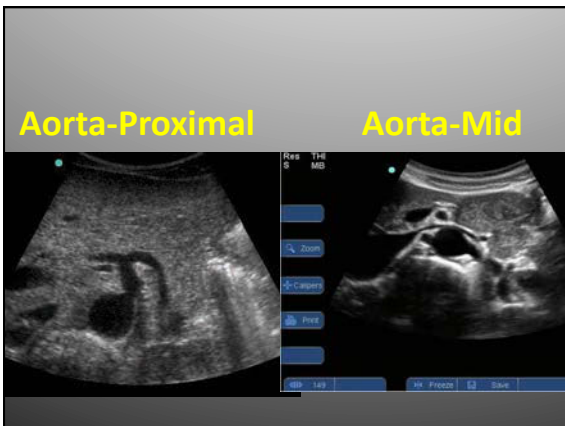
#### Clip of Sliding lung sign

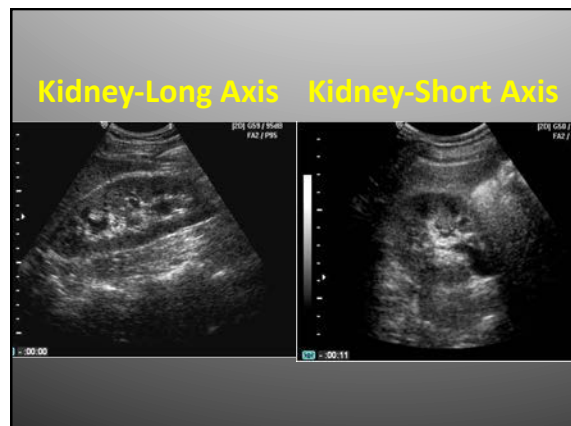
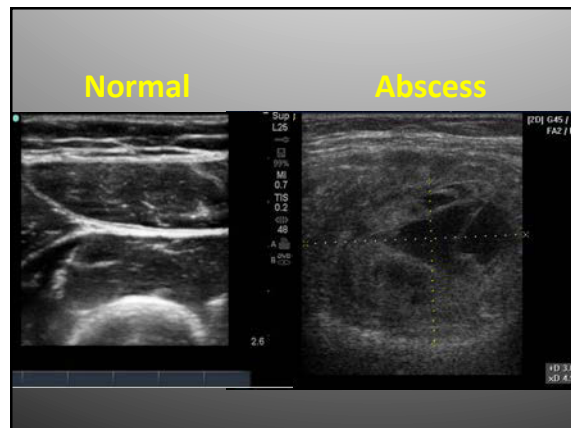
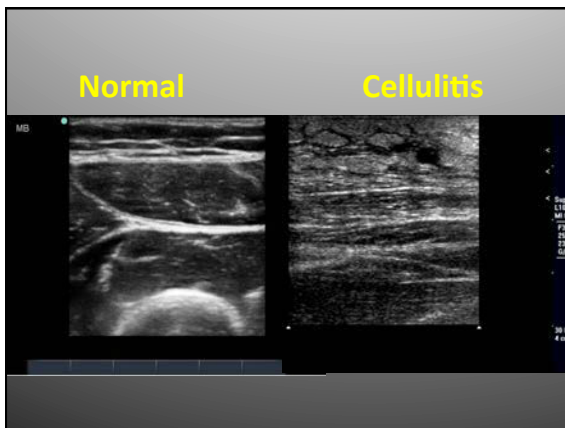
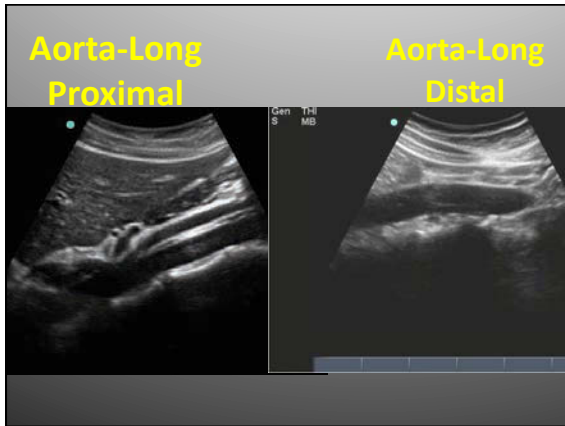


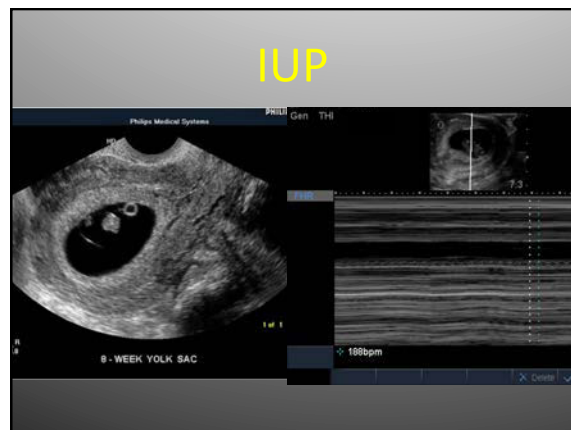
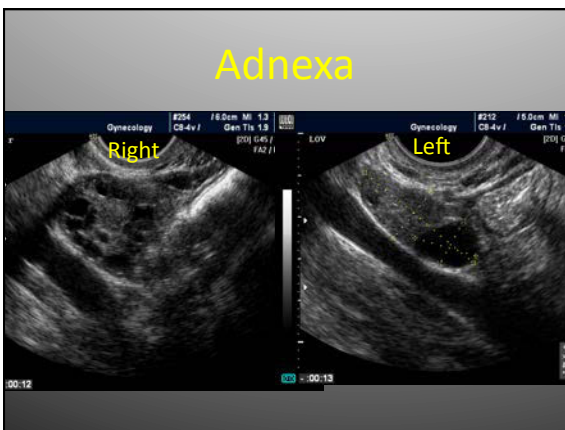
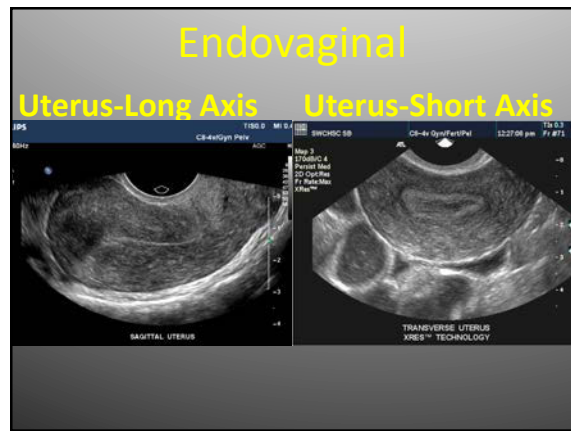
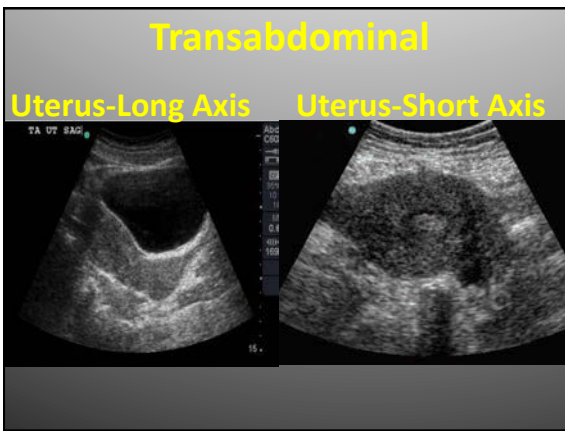
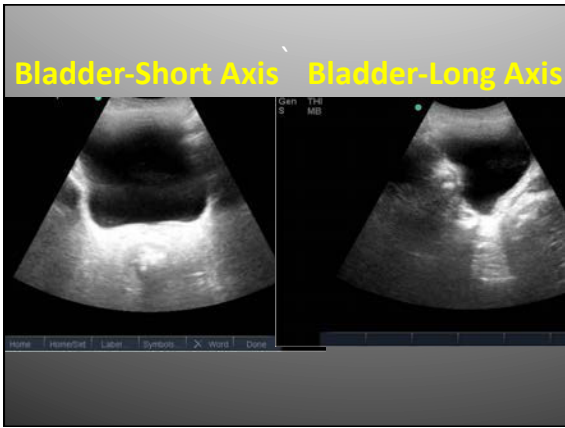
# Cardiac



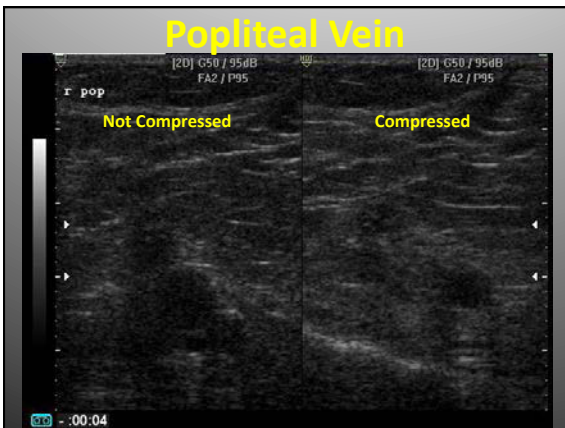
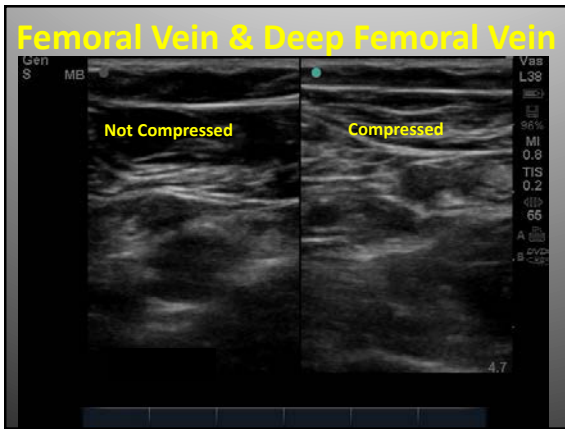
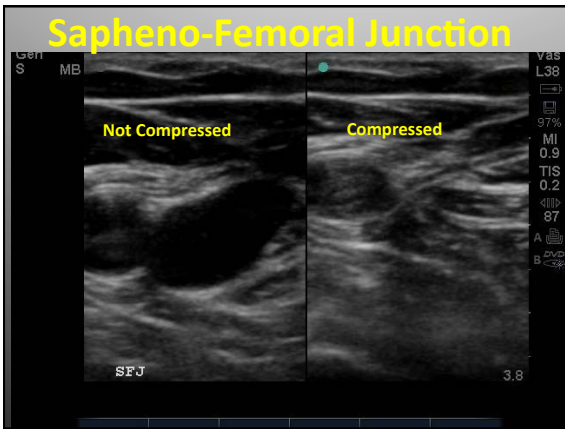
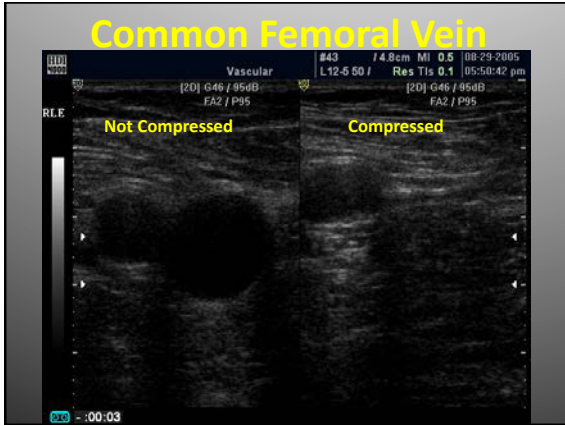
# Aorta



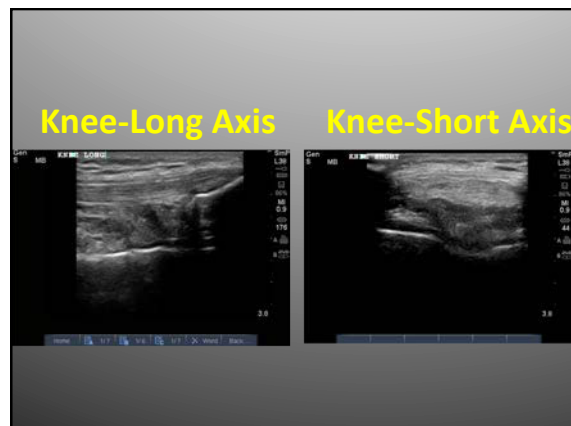
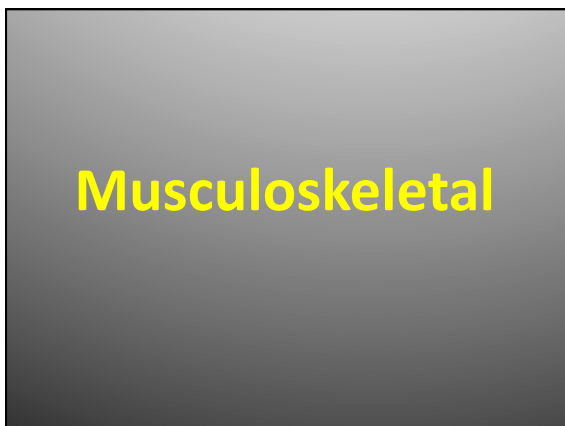
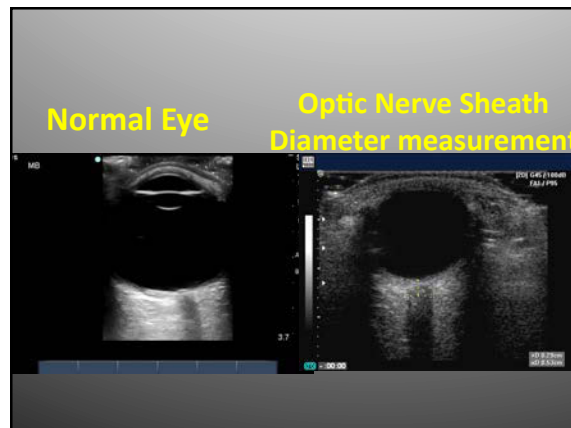
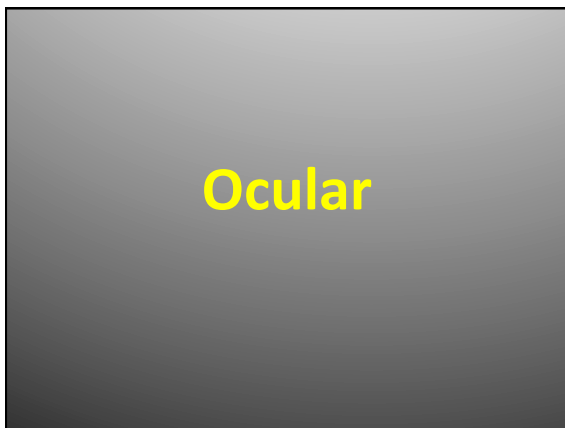
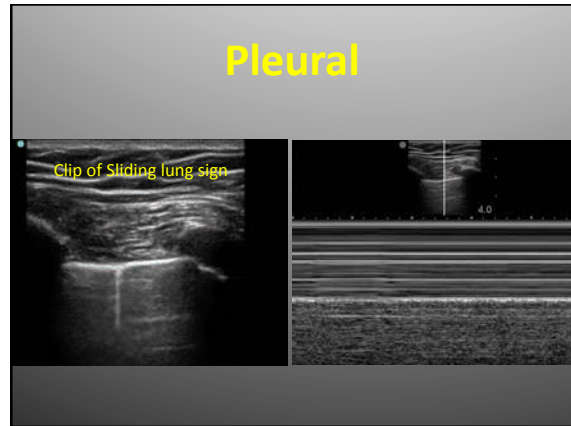
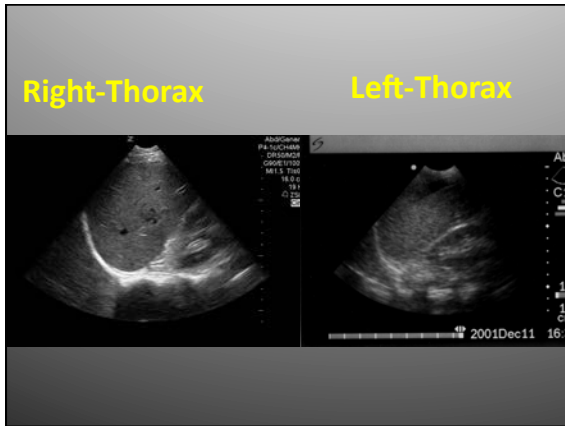




# Lower extremity DVT



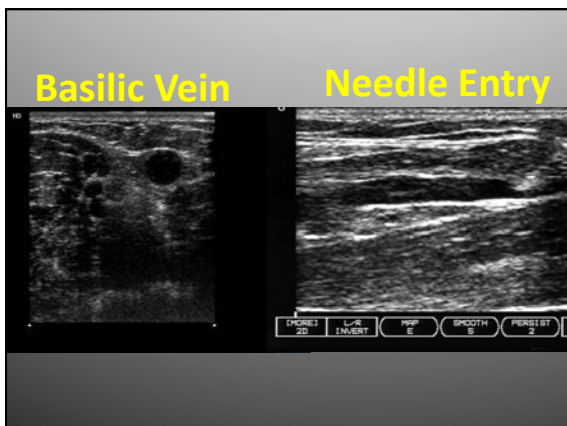
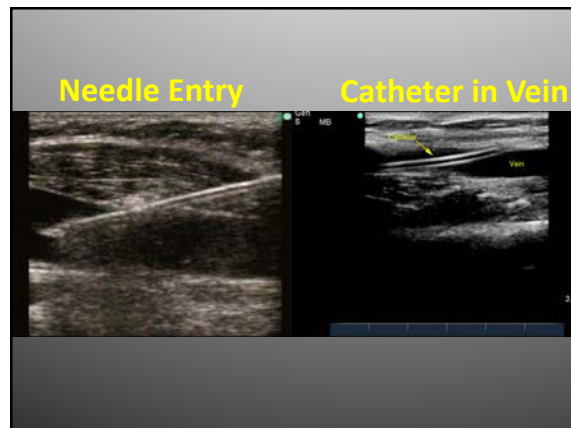
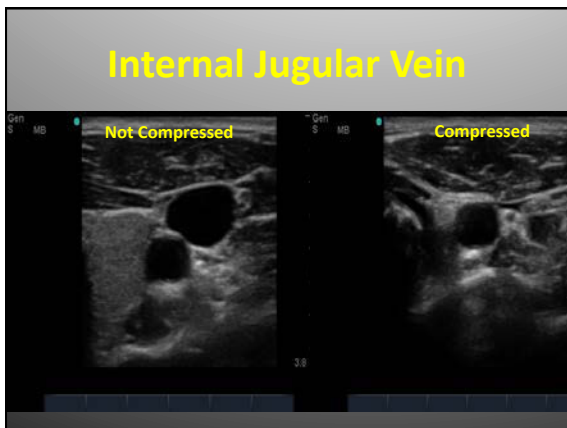
# Thoracic





## Vascular Access

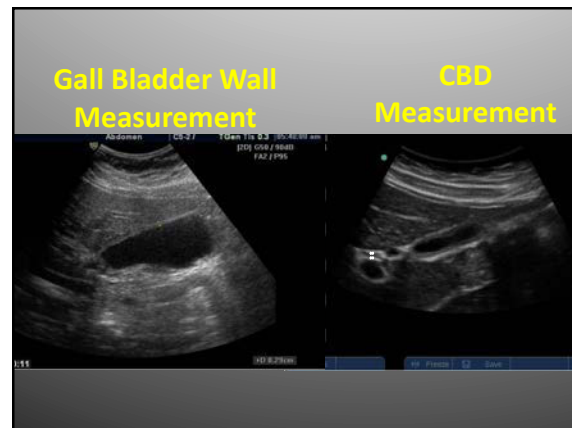
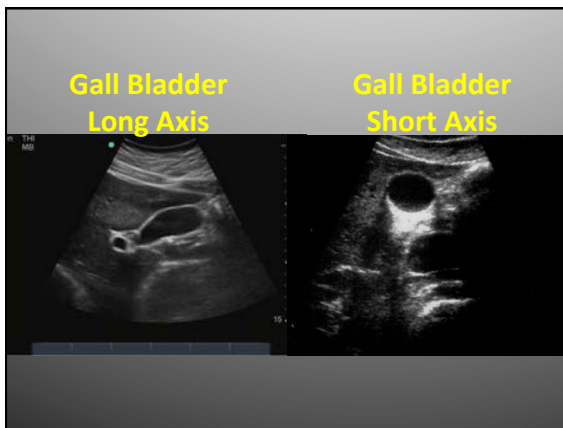
- Ultrasound image of potential access sites
- Documentation of selected vessel patency
- Concurrent real time ultrasound visualization of vascular needle entry or catheter in vessel



## Procedural Guidance

- Images of the site to be localized for procedure
- Real-time image of the needle in the target (if possible)
- Post procedural image

## Biliary



## Scrotal

