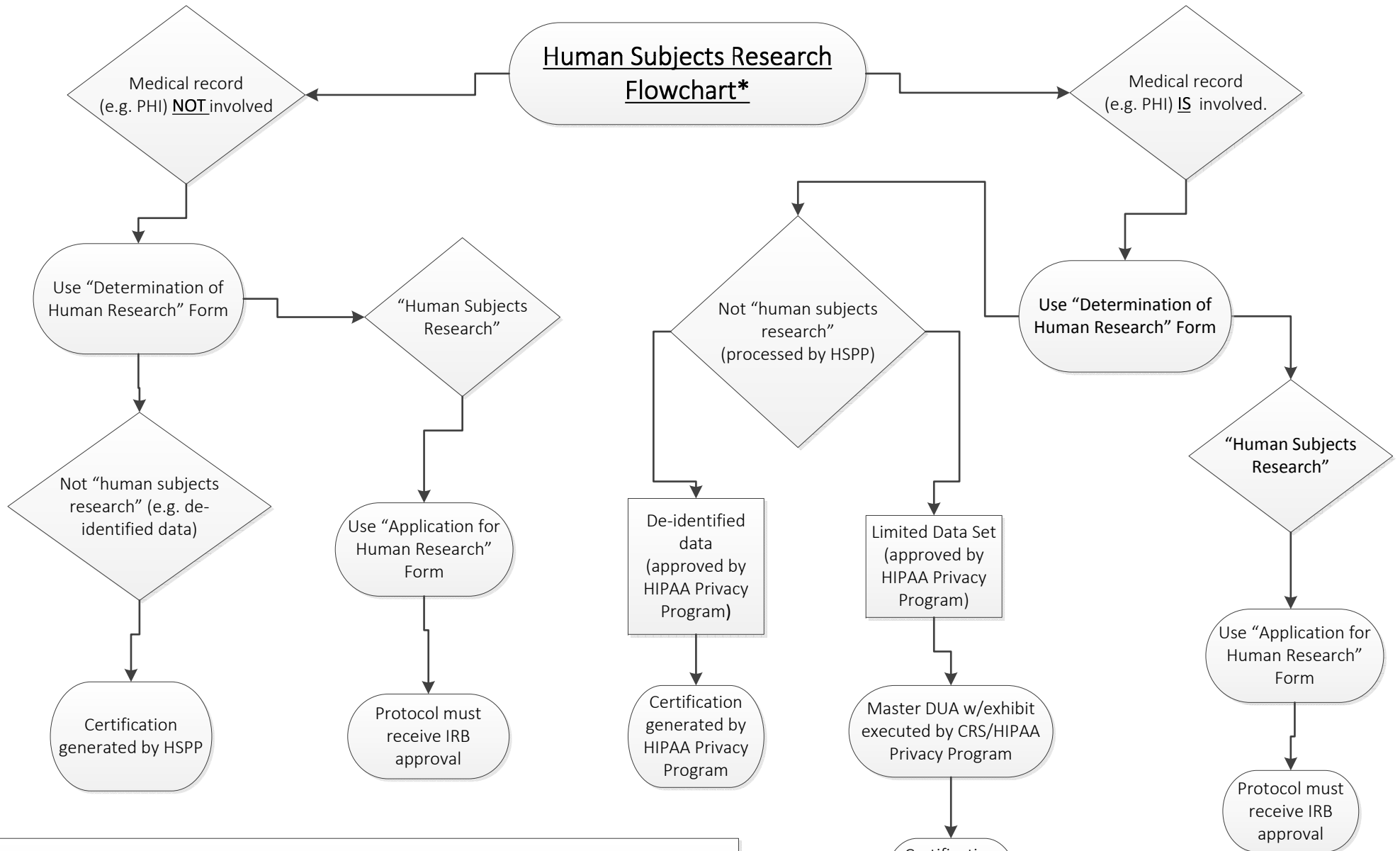


**Human Subjects Research  
Flowchart\***



**\*Use this flowchart if the study involves the following activities:**

- Access to an electronic medical record;
- Use or disclosure of Protected Health Information (PHI);
- Requests for data/specimens from the AHSC Data Warehouse or Specimen Warehouse;
- The project is or will be supported by federal funds;
- The information will be used to support an application to the FDA or involves the use of a test article in a human;
- IRB certification for access to materials from dbGap; OR
- The project involves Native American/Alaskan Native or international indigenous populations.